



# GAT MONTHLY MEMBERSHIP PROGRESS REPORT

Results as of: 5/31/2022

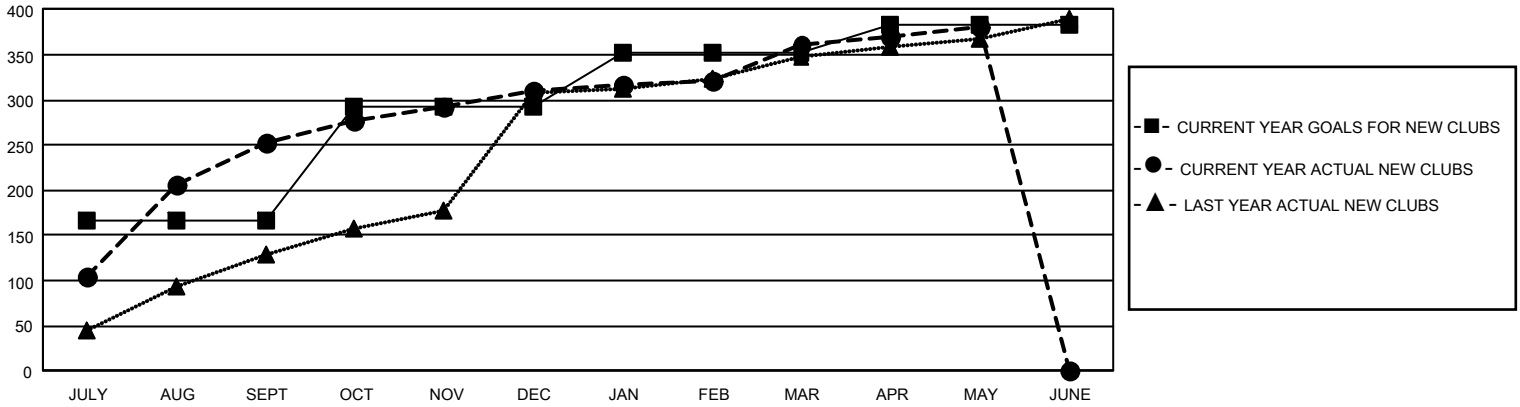
## GMT Constitutional Area 6, Group D

REPORT DOES NOT INCLUDE CLUBS IN UNDISTRICTED AREAS.

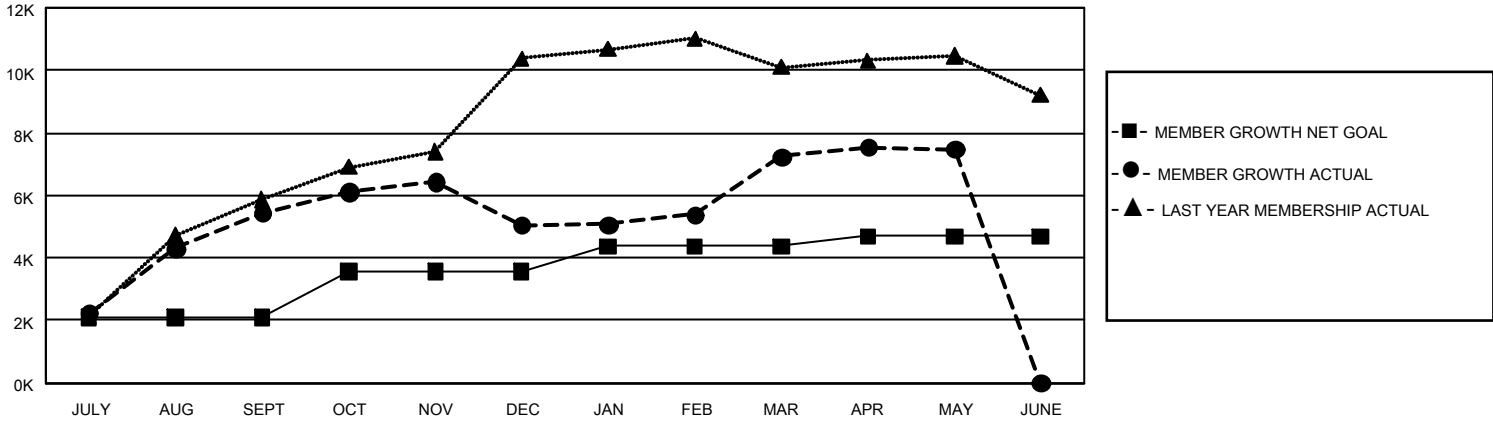
Clubs			
RESULTS FOR 2021-2022			
QUARTER	NEW CLUB GOAL	NEW CLUBS	DROPPED CLUBS
JULY/AUG/SEPT	498	252	36
OCT/NOV/DEC	381	59	29
JAN/FEB/MAR	180	51	14
APR/MAY/JUNE	90	19	1

Members			
RESULTS FOR 2021-2022			
QUARTER	MEMBER GROWTH NET GOAL	MEMBER GROWTH ACTUAL	DROPPED MEMBERS ACTUAL (including transfers)
JULY/AUG/SEPT	2087	7,566	2,061
OCT/NOV/DEC	1487	2,318	2,652
JAN/FEB/MAR	800	3,225	937
APR/MAY/JUNE	320	1,262	964

GOALS AND ACTUAL NEW CLUBS CUMULATIVE



GOALS AND ACTUAL MEMBERS CUMULATIVE



<b>DROPPED CLUBS: 80</b>	1,210 CLUBS OF 2,022 ADDED 1 OR MORE NEW MEMBERS	<b>GENDER DISTRIBUTION</b>	
		MALE 34,142 (70.48%) FEMALE 14,295 (29.51%) NON BINARY 0 (0.00%) PREFER NOT TO ANSWER 7 (0.01%)	
<b>DROPPED MEMBERS</b>		<a href="#">CLICK HERE FOR CUMULATIVE MEMBERSHIP DATA</a>	TOTAL FAMILY UNIT MEMBERS 39,602
DECEASED 42 CLUB CANCELLED 1,619 OTHER 4,954 <b>TOTAL 6,615</b>	FAMILY MEMBERS PAYING HALF DUES 27,362		